

Public Document Pack

Argyll and Bute Council **Comhairle Earra Ghaidheal agus Bhoid**

Customer Services
Executive Director: Douglas Hendry



Kilmory, Lochgilphead, Argyll, PA31 8RT
Tel: 01546 602127 Fax: 01546 604435
DX599700 LOCHGILPHEAD
Email: douglas.hendry@argyll-bute.gov.uk

1 April 2015

SUPPLEMENTARY PACK 1

MID ARGYLL, KINTYRE AND THE ISLANDS AREA COMMITTEE – 8 APRIL 2015 AT 10.00AM WITHIN THE COUNCIL CHAMBERS, KILMORY, LOCHGILPHEAD

I enclose herewith an amended report in respect of item 13 (**LOCHGILPHEAD JOINT CAMPUS – SCHOOL PROFILE 2014/2015**). I would be grateful if you could disregard the previous report.

Douglas Hendry
Executive Director - Customer Services

BUSINESS

- 13. LOCHGILPHEAD JOINT CAMPUS - SCHOOL PROFILE 2014/2015**
Report by Head Teacher, Ann Devine. (Pages 1 - 12)

MID ARGYLL, KINTYRE & THE ISLANDS AREA COMMITTEE

Councillor John Armour
Councillor Rory Colville (Chair)
Councillor Robin Currie
Councillor Anne Horn
Councillor Donald Kelly
Councillor Donald MacMillan (Vice-Chair)
Councillor John McAlpine
Councillor Douglas Philand
Councillor Sandy Taylor

Shona Barton, Area Committee Manager

Contact: Lynsey Innis, Senior Area Committee Assistant; Tel: 01546 604338

This page is intentionally left blank



School Profile 2014/2015

School Name Lochgilphead High School
School Address Lochgilphead Joint Campus, Kilmory, Lochgilphead PA31 8AA
Head Teacher Ann Devine

Overview

Measure	10/11	11/12	12/13	13/14	14/15	% change in Roll over 5 years ^{AA}
Roll (as at census)	520	503	499	491	488	-6.2%
Clothing and Footwear Grant (number of pupils)	26	31	33	37	51	
Clothing and Footwear Grant (% of number of pupils)	5.0%	6.2%	6.6%	7.5%	10.5%	
Clothing and Footwear Grant (%) - Authority Average ^A	6.9%	7.6%	8.5%	9.5%	15.6%	
Free School Meals (number of pupils)	27	no data	45	43	41	
Free School Meals (% of number of pupils)	5.2%	no data	9.0%	8.8%	8.4%	
Free School Meals (%) - Authority Average	10.2%	0.0%	13.1%	12.0%	10.8%	
Free School Meal - National Average for Secondary Schools (%)	14.4%	15.2%	15.4%	15.5%	not yet collated	

Attendance, Absence and Exclusions¹

Measure	10/11	11/12	12/13	13/14	14/15	Range of Attendance (%) over 4 years ^B
Attendance:						1.2%
Attendance (% of school roll)	94.3%	95.2%	95.5%	95.0%	93.9%	
Authorised Absence (% of school roll)	5.4%	4.2%	3.6%	3.4%	3.7%	
Unauthorised Absence (% of school roll)	0.3%	0.6%	0.8%	1.6%	2.3%	
Attendance Number of Pupils (%) - Authority Average	92.5%	93.3%	93.1%	93.1%	92.9%	
Attendance Number of Pupils (%) - National Average	93.1%	not collated	93.6%	not collated	not yet collated	

Measure	10/11	11/12	12/13	13/14	14/15
Exclusions:					
Exclusion Openings	107	108	103	42	41
Exclusion Incidents	17	22	19	8	8
Number of Pupils	13	14	11	8	7
Exclusion Incidents per 1000 pupils	32.6	43.2	37.8	16.1	18.4
Exclusion Incidents per 1000 pupils - Authority Average	61.1	51.5	51.4	37.2	22.9
Exclusion Incidents per 1000 pupils - National Average	40	not collated	32.8	not collated	not yet collated

SQA Performance³

Intermediate 1 *	10/11	11/12	12/13	13/14
Number of Entries	62	80	80	44
Number of passes Grade A-C	48	64	63	23
% of number passes Grade A-C	77.4%	80.0%	78.8%	52.3%
% of number passes Grade A-C Authority Average	79.8%	78.9%	79.5%	72.8%
% of number passes Grade A-C National Average ⁴	77%	78%	79%	73.5%

Intermediate 2 *	10/11	11/12	12/13	13/14
Number of Entries	197	227	217	161
Number of passes Grade A-C	174	192	179	121
% of number passes Grade A-C	88.3%	84.6%	82.5%	75.2%
% of number passes Grade A-C Authority Average	81.1%	79.1%	80.5%	70.7%
% of number passes Grade A-C National Average ⁴	82%	82%	83%	78.1%

National 4 **	10/11	11/12	12/13	13/14
Number of Entries	No National 4 presentations across 10/11 - 12/13			181
Number of passes				181
% of number passes				100.0%
% of number passes Authority Average				100.0%
% of number passes National Average ⁴				93.9%

National 5 **	10/11	11/12	12/13	13/14
Number of Entries	No National 5 presentations across 10/11 - 12/13			452
Number of passes Grade A-C				367
% of number passes Grade A-C				81.2%
% of number passes Grade A-C Authority Average				82.0%
% of number passes Grade A-C National Average ⁴				81.3%

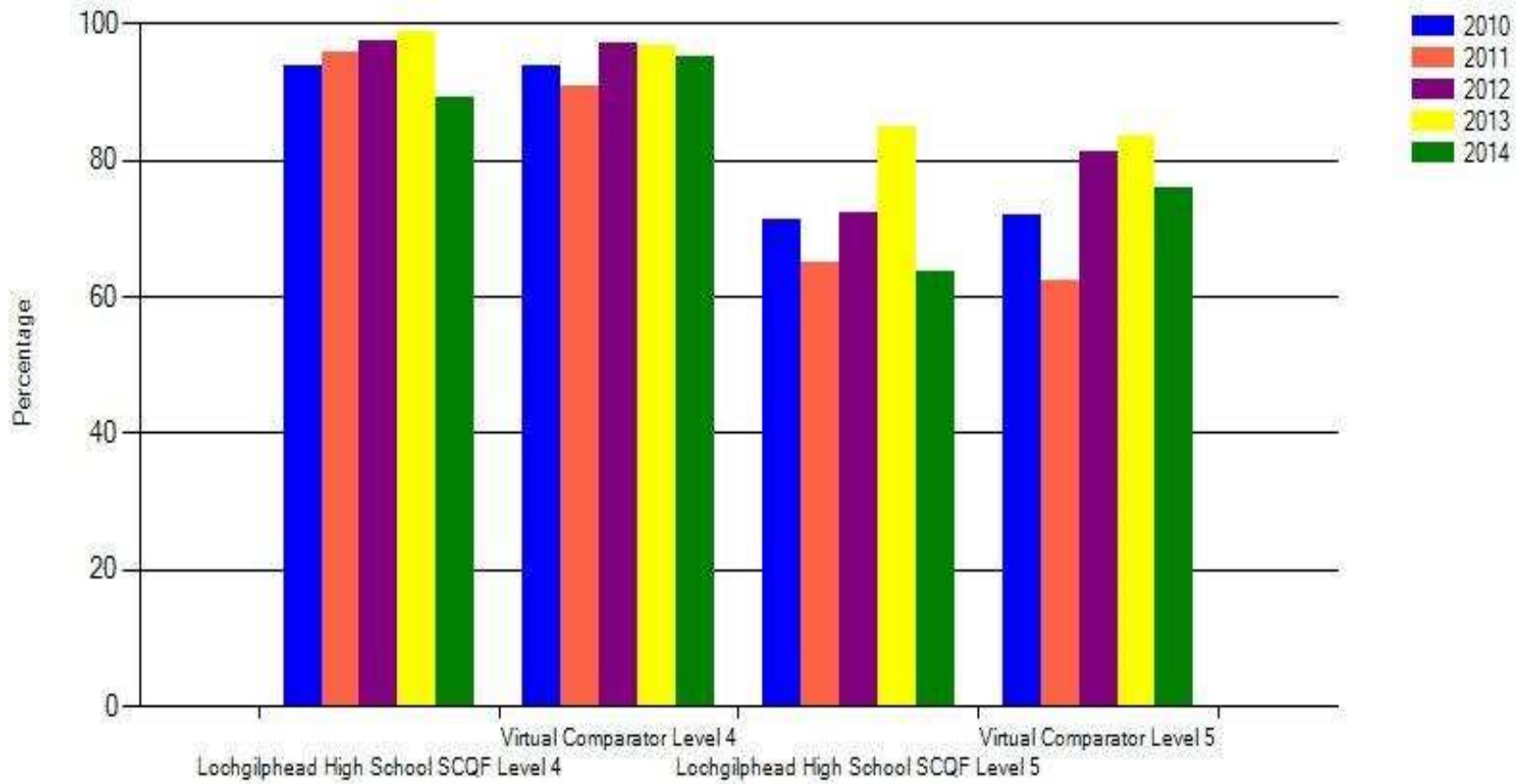
SQA Performance

Higher	10/11	11/12	12/13	13/14
Number of Entries	300	306	289	245
Number of passes Grade A-C	252	244	239	191
% of number passes Grade A-C	84.0%	79.7%	82.7%	78.0%
% of number passes Grade A-C Authority Average	75.9%	76.2%	77.6%	76.9%
% of number passes Grade A-C National Average ⁴	77%	79%	79%	77.6%

Advanced Higher	10/11	11/12	12/13	13/14
Number of Entries	37	70	43	37
Number of passes Grade A-C	26	54	39	28
% of number passes Grade A-C	70.3%	77.1%	90.7%	75.7%
% of number passes Grade A-C Authority Average	75.5%	85.2%	79.3%	79.0%
% of number passes Grade A-C National Average ⁴	81%	82%	84%	81.5%

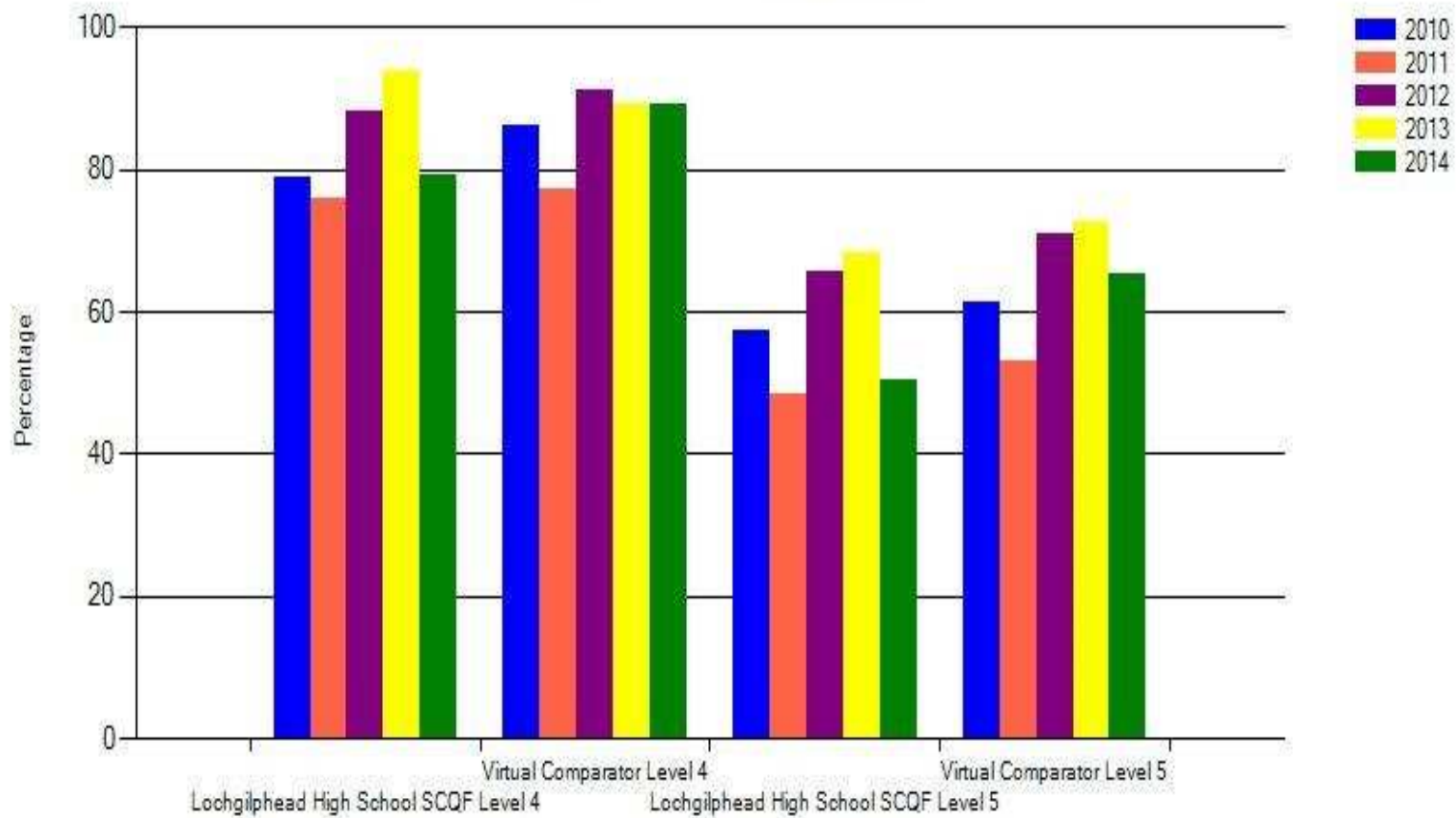
Improving attainment in literacy and numeracy

Percentage of Leavers Attaining Literacy



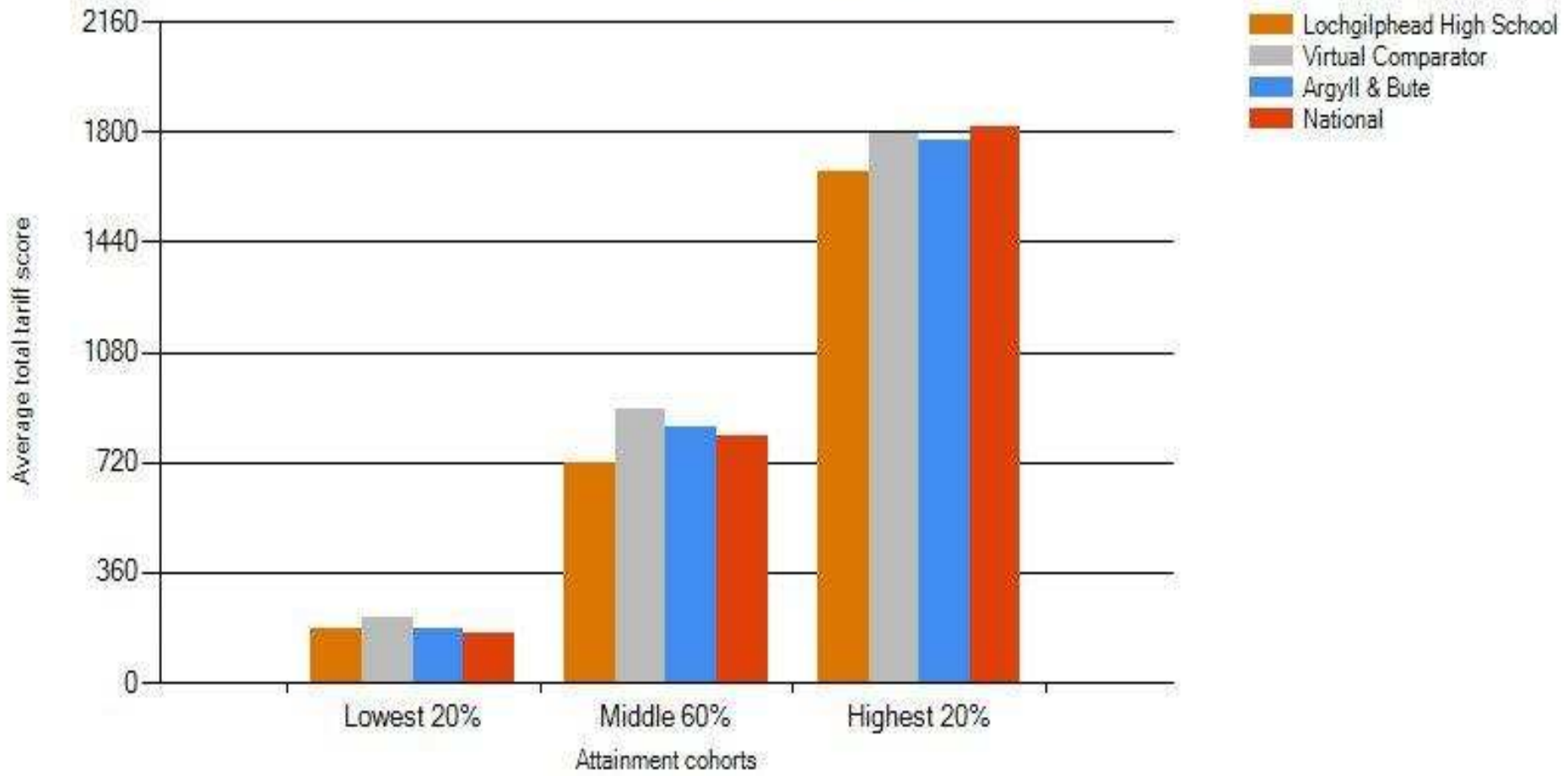
Improving attainment in literacy and numeracy

Percentage of Leavers Attaining Numeracy



Improving attainment for all

Average Total Tariff Score



Curriculum Development and Wider Achievement

Implementation of *Curriculum for Excellence*

New national qualifications implemented and delivered
Good progress on assessment and profiling
Improved flexible pathways at senior phase
Improved transition arrangements

Wider Achievement

- Pupil successes in Skills for Work courses which are now embedded in the curriculum
- Range of accreditation opportunities for pupils within school and the community
- Ongoing development of Enterprise activities – pop-up restaurant, Young Enterprise
- Third Green Flag Award
- Education Scotland, Food for Thought – Phase 2 funding
- Creativity promoted
- Citizenship developed – Student Council, Sports Leaders

Support for Pupils

- ∇ GIRFEC implementation
- ∇ Improved use of technology – voice activated software, digital exams
- ∇ Working towards becoming a dyslexia friendly school

Concerns

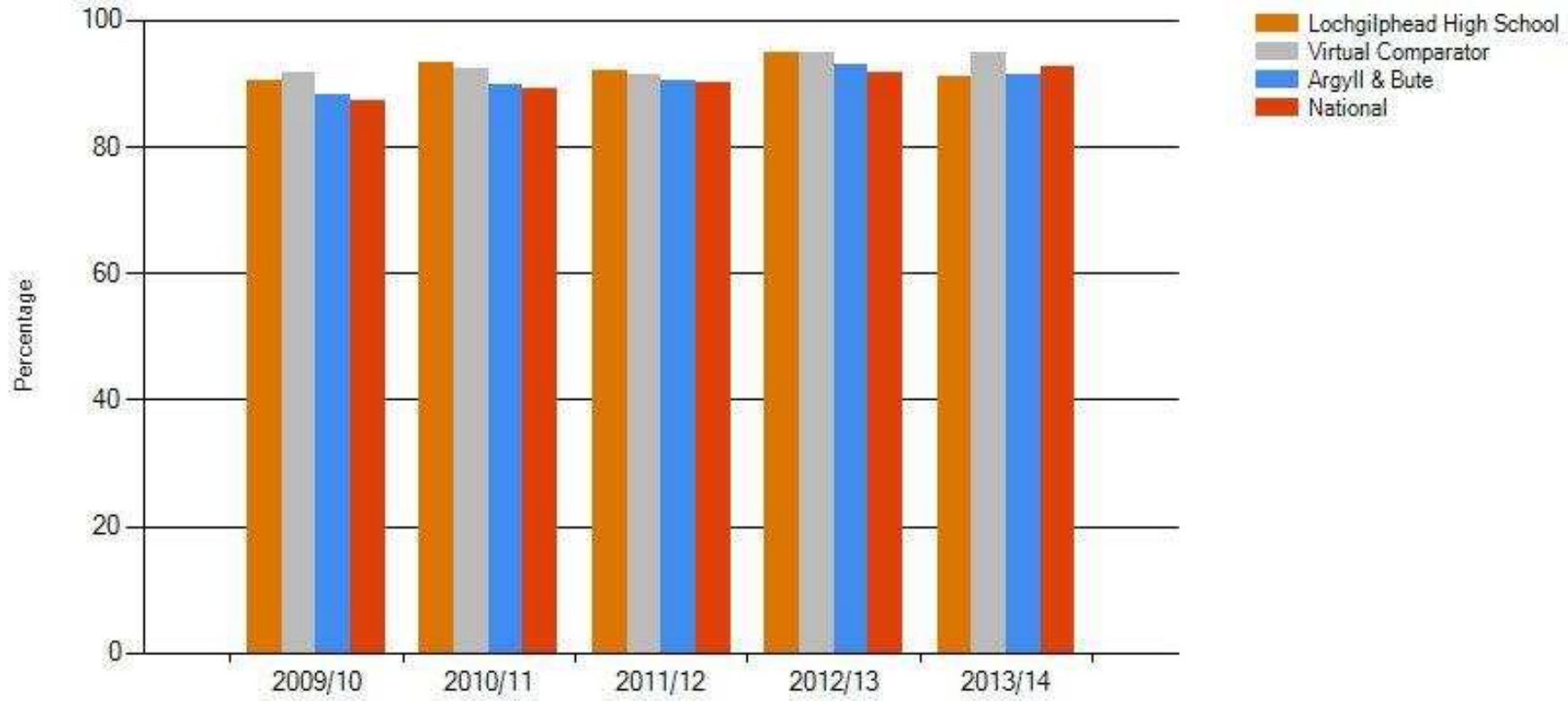
Recruitment

School Leaver Destination Returns (SLDR)***

Measure	10/11	11/12	12/13	13/14	14/15
Number of Total Leavers	87	86	83	92	Data not yet collated
Number of Young People entering Higher Education (%)	36.8%	45.3%	55.4%	34.8%	
Number of Young People entering Further Education (%)	13.8%	22.1%	9.6%	25.0%	
Number of Young People entering Training (%)	0.0%	2.3%	1.2%	1.1%	
Number of Young People gaining Employment (%)	42.5%	20.9%	27.7%	29.3%	
Number of Young People gaining Voluntary Work (%)	0.0%	1.2%	0.0%	0.0%	
Number of Young People entering Activity Agreements (%)	0.0%	1.2%	0.0%	0.0%	
Number of Young People - Unemployed Seeking (%)	6.9%	5.8%	6.0%	7.6%	
Number of Young People - Unemployed Not Seeking (%)	0.0%	0.0%	0.0%	2.2%	
Number of Young People - Unknown (%)	0.0%	1.2%	0.0%	0.0%	
Total number of young people in a Positive Destination (%)	93.1%	93.0%	94.0%	90.2%	
Total number of young people in Other Destination (%)	6.9%	7.0%	6.0%	9.8%	
Total number of young people in a Positive Destination (%) Authority Average	89.8%	90.1%	92.5%	91.0%	
Total number of young people in Other Destination (%) Authority Average	10.2%	9.9%	7.6%	9.0%	
Total number of young people in a Positive Destination (%) National Average	88.9%	89.9%	91.4%	92.3%	
Total number of young people in Other Destination (%) National Average	11.1%	10.1%	8.6%	7.7%	

Increasing post-school participation

Percentage of School Leavers in a Positive Destination



Footnotes

^A Clothing and Footwear Grant (CFG) is not shown as a National Average as each authority set their own criteria and therefore cannot be compared accurately. Please note that 2014-2015 data for CFG and Free School Meals (FSM) is to date (start of January 2015) and therefore may change as the year progresses.

^{AA} Please note the % change in Roll over 5 years shows the percentage change in roll figures from 2010/2011 to 2014/2015 and is not an average.

^B Please note that Attendance and Exclusion data can only be compared over a 4 year period as academic session 2014/2015 is not yet complete and therefore the data for these years may change. The 4 year percentage change compared 4 full years. The range is the difference between the highest and lowest attendance rate for the 4 years.

* 2014/2015 is the last academic year that Intermediate 1 and Intermediate 2 qualifications will be offered as part of the SQA diet of examinations. They have been superseded by National 4 and National 5. Standard Grade qualifications were offered for the last time in 2012/2013 and were superseded by National 4 and National 5.

** 2013/2014 was the first year National 4 and National 5 Qualifications were offered as part of the SQA diet. Therefore no performance data is available prior to this date.

¹ Attendance, Absence and Exclusion information is now collected on a biennial basis and was **not** collected for 2011/2012 or 2013/2014 academic year.

² Authorised absence includes bereavement, short – term exceptional domestic situations, religious observance, weddings of immediate family. Unauthorised absence includes truancy, unexplained absence and most family holidays during term time. Attendance and absence is outlined in Management Circular 3.03.

³ SQA Performance data was collected on 19th November 2014 for all data. The data was collected from SEEMiS Vision. Information previously provided in the SQA Authority Analysis 2014 report for Committee differs slightly to information provided here in order to ensure consistency of approach in collating data for comparative purposes.

⁴ Results up to and including 2012/13 national percentages were sourced from the Annual Statistics Report 2013 (available only as whole percentages). National percentages for 2013/14 came from Attainment Statistics (December) 2014. Both documents produced by SQA.

*** SLDR data is published by Skills Development Scotland (SDS) on behalf of The Scottish Government. The year runs from 1st August to 31st July each year and the data was collected on the 1st Monday in October each year. The data shown in this profile is the initial data collected.

- Higher Education includes HNC, HND and Degree courses
- Further Education includes Access, NPAs and Highers
- Training includes Employability Stage Funds 2 and 3 (previously called Get Ready for Work)
- Employment includes Modern Apprenticeships and any employment over 16 hours per week
- Voluntary includes Barnardos, Oxfam, Red Cross and community based volunteering
- Activity Agreements are for young people who are furthest removed from employment/training/education that are receiving mentoring support from a Trusted Professional
- Unemployment includes those young people who can't work through ill health, are caring for others or are pregnant

National Averages for FSM, Attendance and Exclusions have been taken from Summary Statistics for Schools in Scotland, No.4 | 2013 Edition, 11th December, 2013 (amended 11th February 2014).

This page is intentionally left blank